



NEW MEXICO PUBLIC SCHOOLS INSURANCE
AUTHORITY-
NEW MEXICO TECH

2019 DAVIS VISION BENEFITS

Benefit Overview

\$40 Frame Allowance

OR

**\$130 Frame Allowance
at Visionworks**

PLAN FEATURE	IN-NETWORK COVERAGE
Eye Examination (Once every 12 months)	Covered in Full after \$10 copay
EYEGLOSS BENEFIT	
Spectacle Lenses (Once every 12 months)	Covered in Full after \$15 copay
FRAME (Once every 24 months)	
Non-Collection Allowance	\$40 wholesale allowance \$130 retail allowance at Visionworks stores,
Davis Vision Exclusive Collection /2 (in lieu of allowance) - Fashion - Designer - Premier	Covered in Full Covered in Full Covered in Full
CONTACT LENS BENEFIT (in lieu of allowance) (Once every 12 months)	
Contact Lens Evaluation, Fitting & Follow-Up	
Non-Collection Contacts	15% discount /1
Davis Vision Collection Contacts /2	Covered in Full
Contact Lenses	
Non-Collection Allowance	Up to \$110 allowance plus 15% off overage /1
Davis Vision Collection Contacts /2 (in lieu of allowance) - Disposable - Planned Replacement	Covered in Full 2 boxes / multi-packs 4 boxes / multi-packs

OUT-OF-NETWORK REIMBURSEMENT – UP TO:

Eye Examination: \$35	Single-Vision Lenses: \$25	Trifocal Lenses: \$55	Elective Contacts: \$110
Frame: \$35	Bifocal / Progressive Lenses: \$40	Lenticular Lenses: \$80	Visually Required Contacts: \$210

1/ Additional discounts not applicable at Costco, Sam's Club or Walmart locations.
2/ Collection is available at participating independent provider offices and is subject to change.

The Exclusive COLLECTION

Available at independent provider offices nationwide

More than half
our members
choose from
the Exclusive
Collection
when they can!



Functional and classic designs for the whole family from brands like:



DAVIS VISION
EYECARE REFRAMEDSM

3

Features include

Over 200 fully-covered frames

Try-on tool online

Free one-year breakage warranty



Lenses & Coatings

LENS TYPE / COATING	LENS OPTION DESCRIPTION	MEMBER COST
Clear Plastic Lenses (all ranges of prescriptions & sizes)	Standard plastic material in single vision and lined bifocal or trifocal lens prescription	COVERED-IN-FULL
Oversized Lenses	Larger lenses for bigger frames	COVERED-IN-FULL
Tinting of Plastic Lenses	Gradient or solid lens tinting in various colors	COVERED-IN-FULL
Scratch Resistant Coating	Reduces risk of scratches	COVERED-IN-FULL
Polycarbonate Lenses*	Impact / shatter resistant lenses	\$0* or \$30
Ultraviolet Coating	Provides protection from UVA / UVB rays	\$12
Standard Anti-Reflective (AR) Coating	Reduces internal / external reflection	\$35
Premium AR Coating	Reduces internal / external reflection plus they are easy-to-clean and more impact resistant	\$48
Ultra AR Coating	Best anti-reflective benefits with the virtual elimination of reflections and glare	\$60
Standard Progressives	No-line bifocal for everyday use	\$50
Premium Progressives (Varilux®, etc.)	Provide a wider field of view in the distance and reading viewing areas	\$90
Ultra Progressives (includes digital, free-form styles)	Exceptional comfort and enhanced visual clarity	\$140
High-Index Lenses	Thinner and lighter lenses	\$55
Polarized Lenses	Sunglass lenses that also reduce glare	\$75
Plastic Photochromic Lenses (Transitions® Signature™)	Lenses that darken in the sunlight	\$65
Scratch Protection Plan (single vision / multifocal)	Scratched lens replacement coverage	\$20 / \$40

*Polycarbonate lenses COVERED IN FULL for dependent children, monocular patients and patients with prescriptions +/- 6.00 diopters or greater.

The Davis Vision Exclusive Collection of Contact Lenses



Available at participating
in-network providers



Features many popular brands



Contact lens evaluation & fitting
are fully-covered when
collection contacts are
prescribed by a participating
in-network provider



For non-Collection Contacts,
use your \$110 allowance plus
15% off the overage

\$0 YOUR COPAY

1-Day ACUVUE® MOIST®

ACUVUE® 2

ACUVUE® OASYS®

Biofinity®

Biomedics® Toric

ClearSight™ 1-Day

Frequency® Aspheric

ACUVUE® OASYS® for ASTIGMATISM

ACUVUE® OASYS® for PRESBYOPIA



Always ask your eye care provider if they offer the Exclusive Collection! While these products may be available in many places, the benefits of the Exclusive Collection are only available at participating independent locations.

Visionworks Offers The Most Frames

BRANDS INCLUDE

ZAC POSEN GUESS
eyewear

Vera Bradley

AX

Ray-Ban

LACOSTE 

DRAGON COLE HAAN

 an original
Penguin[®]
by
Munsingwear



- On average, over 2,000 frames at Visionworks stores
- Over 800 frames covered with enhanced \$130 frame allowance at all Visionworks¹ locations
- 750+ Visionworks locations nationwide

SARAH HYLAND
FOR
Candie's
eyewear

1. Excludes Maui Jim eyewear



Member Support

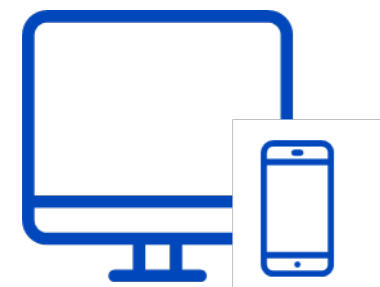
Davis Vision provides you with the tools and support you need to maximize your vision plan investment.

- Over 68,000 provider points of access including:
 - Independent optometrists & ophthalmologists
 - Retailers like Visionworks, Costco, Sam's Club, Walmart and Eye Associates of New Mexico
- No claim forms for in-network services
- Member welcome kit with ID cards & local provider listing
- Secure member website to locate providers, check benefits and more
- Mobile App for iOS & Android

Davis Vision Customer Service



1 (800) 999-5431 – Enter **client code 7129**
300+ customer service representatives



Davisvision.com/member - Log in with **client code 7129**
Online member accounts
Mobile app



Monday – Friday	6:00 am – 9:00 pm (Mountain Time)
Saturday	7:00 am – 2:00 pm (Mountain Time)
Sunday	10:00 am – 2:00 pm (Mountain Time)

Extra Perks



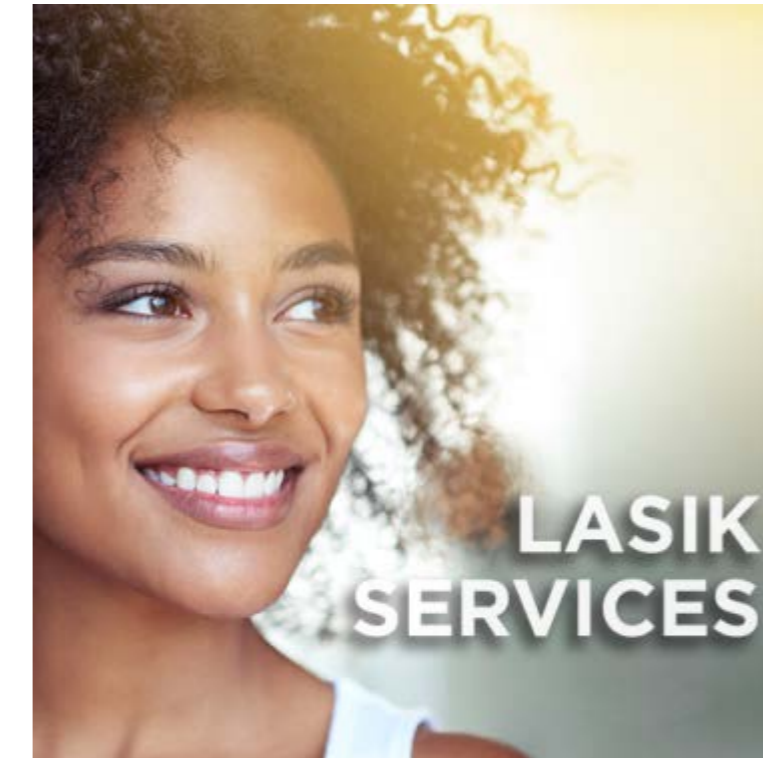
- Industry's only FREE breakage warranty
- Covers all glasses fabricated in our labs
- 12-month warranty



- 50% off any 2nd pair of glasses at Visionworks,
- or
- 30% off 2nd pair at other in-network locations
- Enhanced \$50 frame allowance at any Visionworks



- Free hearing consultation
- 3-year extended warranty & 1-year supply of batteries
- \$495 for basic hearing aid technology (usually \$1,400-\$1,600)
- Best offer across all vision carriers



- Free LASIK consultation
- 1,000+ locations nationwide
- Under \$1,000/eye for Conventional LASIK (usually \$1,677/eye)
- 40% to 50% off national average



- Foster a spirit of health and wellness
- Calculator to estimate the value of a premium vision benefit
- Estimate personal risk factors with Sight on Savings Calculator
- Turnkey content to motivate your workforce

1 (844) 246-0544
epichearing.com/davisvision

1 (855) 502-2020
lasik.qualsight.com



DAVIS VISION

EYECARE REFRAMEDSM



The right network

ACCESS PEOPLE LOVE



Freedom to choose

EYEWEAR FOR EVERY PERSONALITY



Lowest out-of-pocket experience

PEACE OF MIND



Best value

BIGGEST BANG FOR YOUR BUCK