

**A Proposal for the  
Graduate Program in  
Museum Studies  
at the  
University of New Mexico**

*A program to be administered  
by the College of Arts and Sciences  
Albuquerque, New Mexico*

Contact person who can answer specific questions about the program:

E. James Dixon  
Director, Maxwell Museum of Anthropology  
Professor, Department of Anthropology  
e-mail: [jdixon@unm.edu](mailto:jdixon@unm.edu)  
phone: 505-277-4210  
fax: 505-277-1547

## Contents

1. Executive Summary.....	5
2. Purpose of the Program .....	6
2.1 Program Description .....	6
2.2 Program’s role and scope within UNM.....	6
3. Justification for the Program .....	7
3.1 Need .....	7
3.2 Justification for establishing a graduate program in Museum Studies.....	7
Coordination with other programs around the State.....	8
Current Minor in Museum Studies at UNM.....	9
Faculty commitments .....	9
4. Student Characteristics .....	10
Projected Enrollment .....	10
Demographic characteristics and educational goals of the target students .....	10
Student Support (GA & TA positions, scholarships, etc.).....	11
Employment goals of the typical student .....	11
5. Institutional Readiness for the Program .....	18
5.1 UNM has prepared for this program in 4 critical areas.....	18
5.2 All necessary resources have been secured by UNM for the program .....	18
UNM faculty are prepared and committed to teach Museum Studies students.....	18
Related Courses .....	18
Museum Studies Reference Library and Seminar/Conference Room.....	18
Library Impact Assessment .....	19
5.3 Support for the New Degree.....	22
5.4 State approval is the only missing element .....	23
5.5 Degree program administrative plan .....	23
6. Summary of Costs and Benefits .....	25
Projected Cost:.....	27
7. Assessment of Operations and Impact.....	31
7.1 Expect overhead costs .....	31
Student Support Services.....	31
7.2 Human Resource Plan .....	31
Workload Effects of current Faculty and Support Staff .....	32
Faculty and Staff Development .....	33

8.	Admission Criteria and Requirements for Master’s Degree (M.A. or M.S.) .....	34
8.1	Application and Admissions .....	34
8.2	Degree Requirements .....	34
	Degree options:.....	35
8.3	Learning Outcomes .....	37
	Measuring Learning Outcomes .....	37
8.4	Graduate Degree Program Curriculum .....	38
	Graduate Minor in Museum Studies.....	38
	Museum Studies (MSST) .....	39
	New Courses Approved Spring 2010:.....	40
9.	Accreditation Plan .....	41
10.	Additional Information .....	41
10.1	WWW Sources:.....	41
10.2	UNM Museum Studies Working Group: .....	41
11.	Letters of Support .....	43
11.1	Internal Letters of support and endorsement:.....	43
11.2	External Letters of support and endorsement:.....	43
11.3	Letters of support from associated universities.....	43

**Tables**

Table 1: Projected graduate enrollment and graduate student credit ..... 10  
Table 2: Museum-Related Job Postings on Dec. 6, 2011 ..... 11  
Table 3: Potential New Mexico Employing Institutions and Organizations ..... 13  
Table 4: UNM Library Holdings in Selected Subjects in OCLC WorldCat..... 20  
Table 5: Titles Held by UNM Peers in Selected Museum Subjects as Reflected in OCLC  
WorldCat, November 2009 ..... 20  
Table 6: Selected UNM Library Databases ..... 21  
Table 7: Selected Museum Studies Journals..... 22  
Table 8: Expected number of students for the first six years..... 26  
Table 9: Revenues and Extramural Contributions ..... 27  
Table 10: Budget..... 28  
Table 11: Projected Museum Studies Graduate Program Cost Estimates and Resources 29  
Table 12: Museum Studies Graduate Projected Revenues Models Provided by Extended  
University (2010) ..... 30  
Table 13: Course Requirements..... 35

**Figures**

Figure 1: Museum Studies Graduate Program Governance Chart..... 23  
Figure 2: Museum Studies Graduate Program Operational Chart ..... 24

## **1. Executive Summary**

This program will establish an interdisciplinary graduate course of study leading to a M.S. or M.A. degree in Museum Studies and strengthen and expand UNM's existing curriculum and graduate minor in Museum Studies. The major goals are: a) to provide a formal graduate program to meet New Mexico's need for trained museum professionals, b) to strengthen New Mexico's visitor industry, c) to increase the quality of museum based public education, d) to support and provide training for tribal and pueblo museums and cultural centers, and e) to encourage and facilitate object-based scientific and humanistic education and research. Students completing the Master's degree will be prepared and highly competitive for a variety of occupations, including: collections managers, curatorial assistants, registrars, museum educators, exhibit developers, informal educators, and administrators. The Museum Studies Master's degree will also be valuable to students who wish to become outdoor educators, interpreters, or naturalists. Some graduates will choose to pursue a Ph.D. to prepare for advanced curatorial work.

The core curriculum offers broad interdisciplinary graduate-level museum training in anthropology, fine arts, natural history, and science networked with other state universities and museums. It is designed to enable students to segue undergraduate and graduate museum experience and course work into an organized program of advanced study. It provides firm grounding in museum history and theory with emphasis on current ideas, issues, and practices confronting contemporary museum professionals. There is no graduate degree program in Museum Studies in New Mexico, and the program the program is synergistic with museum-focused programs at other New Mexico universities. The program is consistent with UNM's mission of providing graduate training in technical, humanistic, and scientific areas that are critical to the economy of the State of New Mexico and the United States. It leverages UNM's existing human and museum resources to serve as laboratories for application of museum concepts and techniques. It makes UNM more competitive for research, education, and outreach funding from NSF, NEH, IMLS, and a wide array of private and federal funding sources and foundations. It enhances UNM's research and educational partnerships with state, federal and private institutions, organizations, and agencies and provides new opportunities for inter-collegiate cooperation and collaboration.

UNM's Museum Council and Museum Directors fully support this proposal and are committed to the programs success. It has been vetted and endorsed by the faculty and administrators of the College of Arts and Sciences, College of Fine Arts, UNM faculty senate, and UNM Board of Regents. The proposal describes the details of the committed institutional resources and funding that are in place to launch the new program. No additional or new state resources are requested.

## **2. Purpose of the Program**

2.1 Program Description .....	6
2.2 Program's role and scope within UNM .....	6

### **2.1 Program Description**

The purpose of this program is to establish an interdisciplinary graduate course of study leading to a M.S. or M.A. degree in Museum Studies and to strengthen and enrich UNM's existing graduate minor in Museum Studies. The major goals are: a) to provide a formal graduate program to meet New Mexico's growing need for trained museum professionals, b) to strengthen New Mexico's visitor industry, c) to increase the quality of museum based public education, d) to support and provide training for tribal and pueblo museums and cultural centers, and e) to encourage and facilitate object-based scientific and humanistic research and education.

### **2.2 Program's role and scope within UNM**

This program will strengthen UNM's ability to build, through its museums, its growing and effective network of partners promoting the university mission through student-centered programming in cooperation with the UNM's academic departments. UNM Museums are significant assets for student collaboration with each other, faculty and staff, and organizations outside the university. The Museum Studies Program will engage students, faculty, and staff in exciting physical and intellectual challenges for collection and field research and provide unique settings for formal and informal object-based research and education. The program will build upon UNM Museums' existing collaborative relationships with on- and off-campus scholars and create an expanded off-campus resource base for programmatic collaboration. The graduate program will contribute original research enhancing the acquisition and understanding of the museums' collections. Knowledge will be disseminated to professional and public audiences through scholarly refereed and popular publications, lectures, exhibits, formal and informal museum education programs, and a variety of public and academic programs.

The Museum Studies Program will advance UNM's mission by providing graduate training in the applied technology and the social and natural sciences important to the economy, natural resources, and cultural heritage of New Mexico and the nation. This program will benefit UNM's national stature by recruiting exceptional graduate students and help attract new faculty in cognate disciplines by providing expanded opportunities for museum-based research and outreach. UNM's museums are widely recognized as regional and national treasures resulting from their collections and professional expertise in research and formal and informal education. It will promote UNM's value of excellence by focusing and strengthening existing curriculum. It will bring together a unique consortium of UNM Museums, courses, laboratories, researchers, museum professionals and educators in a statewide and national network to train qualified graduate students for teaching, research, and public service in Museum contexts.

### 3. Justification for the Program

3.1 Need .....	7
3.2 Justification for establishing a graduate program in Museum Studies .....	7

#### 3.1 Need

*First*, the State of New Mexico ranks tenth in the United States in the number of museums per capita. The number of museums continues to grow and existing ones expand to meet ever-increasing demand. Tribes and pueblos also are using their resources to build and strengthen museums and cultural centers. *Second*, the state lacks a multidisciplinary educational path to the museum profession, while at the same time there is a need for trained museum professionals. Studies project increased demand for trained museum professionals with graduate-level expertise in museum studies. Financial support for museums and museum-related facilities has increased over the past two decades. More than 100,000 people are employed in museums in the United States as collection managers, curatorial assistants, registrars, museum educators, exhibit development staff, curators and administrators. *Third*, graduates will be qualified for a variety of other careers including outdoor education; interpreters in local, state, and federal parks and visitor centers; and mid-level careers in field biology, fine arts, anthropology, and natural history. Others will be inspired to continue their education at the doctoral level. *Fourth*, UNM has five museums with significant collections and is uniquely positioned to provide the leadership to offer additional graduate education in museum studies. *Fifth*, the proposed program will enhance educational opportunities for a broad range of diverse students. It will provide training opportunities for individuals from underrepresented groups, including Native Americans, for positions in emerging tribal and pueblo museums and similar cultural institutions. *Sixth*, it will create new and unique opportunities for collaborative and self-directed research and learning that will serve as a resource for knowledge for New Mexico, the nation and the world. *Seventh*, research funding, graduate courses, and faculty expertise in museum studies are already in place in several UNM departments, centers, and institutes in the Departments of Anthropology, Biology, Earth and Planetary Science, and Fine Arts. A focused Museum Studies program in partnerships with NM museums, tribal governments, and local, state, and federal agencies will enable New Mexico to compete more favorably for extramural research and educational funding.

#### 3.2 Justification for establishing a graduate program in Museum Studies

There are about 90 museum studies graduate programs in the US. The majority of these are sub-programs or “tracks” within anthropology or art departments. In the Rocky Mountain/Plains/Southwest region, only the University of Colorado Boulder and Texas Tech University offer broad interdisciplinary graduate museum training in anthropology, fine arts, natural history, and science. While New Mexico State University offers an emphasis in museum studies as part of its master’s degree in Anthropology, the state does not have a comprehensive graduate degree program in Museum Studies that aims to train museum professionals broadly. Moreover, while the Institute of American Indian Arts

(IAIA) in Santa Fe offers distance learning and Associate and Bachelor's degrees in Museology, the IAIA program is directed to Native Americans focusing primarily on Native American Arts and Cultures. The IAIA program is designed to prepare individuals to assume careers in Native American Museums, cultural centers, and galleries. The proposed UNM Program will offer greater disciplinary breadth including Native American Studies, as well as anthropology, archaeology, biology, earth and planetary science, and fine arts and will work cooperatively with the IAIA program. The UNM program will be synergistic with IAIA and provide a path for education beyond the associate and baccalaureate levels.

*Coordination with other programs around the State*

The faculty and staff of the UNM Museum Studies Graduate Degree Program are committed to collaboration and developing educational opportunities for students throughout New Mexico. The programs at Eastern New Mexico University (ENMU), Western New Mexico University (WNMU) and Highlands University, NM Tech, and New Mexico State University (NMSU) offer courses designed to provide some museum training that supplements graduate and undergraduate education. NMSU offers graduate students in Art, Anthropology and History the opportunity to receive a Master's Degree with an emphasis in Museum Studies. It also offers a B.F.A. in Museum Conservation through its art department. Highlands offers a Program for Interactive Cultural Technology that trains students in exhibition design and project management. In addition, NMSU, NM Tech, ENMU, Highlands and WNMU all have museums and engage students in museum related activities and courses. Thus, all of these institutions offer opportunities for inter-collegiate cooperation and collaboration, if not in the form of dual degree programs, at least in the transfer of credits between programs or cross-recruitment of students. None of these institutions, however, offers a full-scale graduate degree program in Museum Studies. The proposed UNM program is multidisciplinary and builds upon the strengths of UNM's five museums and its doctoral programs in Anthropology, Art and Art History, Biology, and Earth and Planetary Sciences. Therefore, we anticipate that some students exposed to museum studies at our other state universities will be inspired to pursue the Museum Studies master's program at UNM, and that some UNM students will be motivated to take specialized classes or hold internships in such programs as NMSU's art conservation program or Highlands's Interactive Cultural Technology program.

UNM faculty are committed to maintain ongoing dialogue and discussions with our peers across the state focusing on enhancing the opportunities for graduate studies in diverse settings and sharing resources and expertise between campuses. Three senior members of the UNM faculty drove to Las Cruces and consulted with NMSU who had expressed concerns that the UNM master's degree program might compete with their emphasis in Museum Studies offered through the departments of Anthropology, Art, and History. While opportunities for collaboration are challenging, UNM faculty hope that it will be possible to work together with NMSU faculty so that our programs will continue to complement one another as they do now. For example, UNM does not plan to develop programs in museum conservation or in public history. It is conceivable that some UNM students would be interested to explore those possibilities, particularly if NMSU were



eventually to develop a graduate program in Museum conservation. We believe that the UNM program as developed in this proposal is unique and complementary to, rather than in conflict with, NMSU museum studies emphasis. Moreover, Highlands University's Cultural Technology Program, the Herbarium at WNMU, and ENMU's Blackwater Draw Museum have all provided letters of support for this proposal and all express strong interest in collaboration and developing student opportunities. UNM will continue to collaborate with all museums and state university museum programs by seeking their advice and expertise to expand this pathway to graduate education and the museum profession.

#### *Current Graduate Minor in Museum Studies at UNM*

UNM currently offers a graduate minor in museum studies available to any student enrolled in a graduate degree program. The minor requires 9 hours of course work and 6 credit hours of internship for a total of 15 hours. It includes two core courses [MSST 507, Museum Practices (3) and MSST 585, Seminar in Museum Methods (3)] plus ARTH 529, Topics in Art History (3) and MSST 586, Practicum: Museum Methods (3) for the 6 hour internship requirement. The existing graduate minor provides the foundation for the core curriculum of the proposed graduate program, which will be expanded to include two new courses. The UNM Board of Regents approved an undergraduate certificate program in October 2011 and the first course will be offered in the Spring semester 2012. Courses offered through the certificate program will provide a "gateway" for some students to pursue advanced study in the Museum Studies graduate program.

The Seminar in Museum Methods and Practicum: Museum Methods (MSST 585 and 586) will continue to be taught by faculty in disciplines other than Art History as part of the expanded required curriculum. It will be offered by appropriate faculty and staff in all five of UNM's museums and by qualified faculty in cognate departments. Graduate seminars already offered in cognate departments also may count as advanced seminar hours in Museum Studies with advisor approval; therefore it is anticipated that the proposed program will increase enrollment in some of these seminars.

#### *Faculty commitments*

Existing and contractually committed faculty resources at UNM include these established graduate courses. In addition, Maxwell Museum faculty and curators have developed a Museum Collection Management course offered by and along with faculty and curators from the Museum of SW Biology and Art Museum. All participants are committed to continue to offer this interdisciplinary course on an annual basis. The Department of Art and Art History has agreed to relinquish ownership of the MSST courses to the new Museum Studies Department. These established courses [MSST 507 Museum Practices, MSST 585 Seminar in Museum Methods, MSST 529 Topics in Art History, and MSST 586 Practicum: Museum Methods] will be cross listed with the Department of Art and Art History and the existing graduate minor will continue to be offered and remain unchanged.

#### 4. Student Characteristics

##### *Projected Enrollment*

Graduate applicants to the program will be accepted, rejected or invited to reapply based on a combination of factors, including GPA, GRE scores, letters of reference, area of interest, and the number of students the program can accommodate in a given two-year cycle. A primary factor for graduate admission will be identifying a faculty member from one of UNM's Museums or academic departments whose expertise matches the interests of an applicant and who is willing to advise and mentor the student. Potential application and enrollment has been evaluated based on statistics for a similar program at the University of Colorado at Boulder (UCB) compiled for the period between 1998 and 2005 for that institution's 7-year program review. The UCB program received an average of 45 applications per year (range 36-57) and admitted on average 11 per year (range 9-13). It is important to recognize that the number of applicants increased significantly over time. On average about 50% of students were state residents and 50% non-residents. The mean GPA of students accepted upon entrance was 3.468 (mean range/year 3.3-3.6) and the mean GRE scores for verbal (V), quantitative (Q), and analytical (A) were 564, 589, and 632, respectively. The means of V, Q, and A scores for all UCB graduate programs for 2004 were 558, 659, and 657, respectively. Mean time to graduation was 2.5 years (range 2-3.5), which was identical to the mean for M.A. graduates in UCB's A & S natural science departments.

**Table 1: Projected graduate enrollment and graduate student credit**

Year	New Graduate Students	Returning & Continuing Students	Total Students	Credit Hours
1	8	0	8	144
2	9	8	17	282
3	10	14	24	315
4	10	15	25	330
5	10	15	25	330

##### *Demographic characteristics and educational goals of the target students*

It is anticipated that in-state students in this program will reflect the ethnic, gender and age make-up of the population in New Mexico and out-of-state students will reflect national demographics. However, museums are important foci for underrepresented groups in American society, and the program is anticipated to attract a larger percentage of applicants from underrepresented groups compared to UNM graduate programs as a whole. Anecdotal evidence suggests that there will be a greater number of female than male applicants (the UCB applicant pool was approximately 80% female consistently between 1998 and 2005). Anecdotal evidence (also from the UCB program) suggests that the majority of applicants will select anthropology as their cognate discipline, possibly followed in descending order by biology, fine arts, and earth and planetary sciences.

*Student Support (GA & TA positions, scholarships, etc.)*

Students in good standing will be eligible to receive funding through the program in the form of graduate assistantships and through grants and contracts awarded to faculty. The New Mexico Association of Museums (NMAM) provides scholarships to attend its annual meeting to beginning museum professionals and students. The Hibben Trust has agreed to fund two recurring graduate assistantships with preference given to Native American applicants beginning in the fall of 2012. It is the program's goal to provide as much funding as possible for all of its students, but it is recognized that it will take time and that any level of funding for any individual student cannot be guaranteed.

*Employment goals of the typical student*

An analysis of the number of museums in the US using statistics compiled by the American Association of Museums (AAM), the Institute of Museums and Library Services (IMLS), and additional web sources indicates that New Mexico ranks tenth in the nation in the number of museums per capita. According to the Bureau of Labor Statistics, job opportunities in Museum Studies are expected to increase faster than the national average possibly by as much as 18% through 2016 (<http://www.bls.gov/oco/ocos065.htm>). Given the Bureau of Labor projections, the relatively large number of museums per capita in New Mexico, the regional emphasis on developing tourism, and increasing needs for curation related to biological and cultural research and preservation, it reasonable to presume there will be employment opportunities both regionally and nationally for highly qualified museum professionals (Table 2).

Students completing the master's degree will be prepared for a variety of occupations, including: collections managers, curatorial assistants, registrars, museum educators, exhibit developers, park interpreters, informal educators, and administrators (Table 3). The Museum Studies master's degree will also be valuable to students who wish to become outdoor educators, interpreters, or naturalists. Some graduates may choose to pursue a Ph.D. to prepare for advanced curatorial work in museums.

**Table 2: Museum-Related Job Postings on Dec. 6, 2011**

Position	Institution	Location
Director of Information Technology	O'Keefe Museum	Santa Fe, NM
Development Assistant	O'Keefe Museum	Santa Fe, NM
Museum Registrar Part-Time	City of Artesia Museum	Artesia, NM
Instructional Coordinators - Advanced	Department of Cultural Affairs	Santa Fe, NM
Exhibits And Collections Preparato	Department of Cultural Affairs	Santa Fe, NM
Museum Registrar	Department of Cultural Affairs	Santa Fe, NM
Curator of Archeology	Department of Cultural Affairs	Santa Fe, NM
Curator of Exhibits	Maxwell Museum of Anthropology	Albuquerque, NM
Museum Assistant	UNM Art Museum	Albuquerque, NM
Multitouch C++ Application	Ideum	Corrales, NM

Developer		
Web and Mobile Programmer	Ideum	Corrales, NM
ActionScript Programmer	Ideum	Corrales, NM
Park Ranger (Protection)	White Sand National Monument	Abiquiu, NM
Park Ranger	Forest Service	Multiple Locations, NM
Historian	Army National Guard	Santa Fe, NM
Director of Education	NM Museum of Natural History and Science	Albuquerque, NM
Colorado		
Position	Institution	Location
Collections Management Intern	Town of Windsor Museum	Windsor, CO
Director of Planned & Endowment Gifts	Denver Museum of Nature & Science	Denver, CO
Nonprofit Accountant	Clyfford Still Museum	Denver, CO
Museum Educator	Children's Museum of Denver	Denver, CO
Fundraising Database Manager	Children's Museum of Denver	Denver, CO
Lead Cashier	Denver Museum of Nature & Science	Denver, CO
Executive Director	Western Museum of Mining & Industry	Colorado Springs, CO
Development Administrative Assistant	Museum of Contemporary Art Denver	Denver, CO
Special Events Manager	Museum of Contemporary Art Denver	Denver, CO
Arizona		
Position	Institution	Location
Director of Development	University of Arizona Museum of Art	Tucson, AZ
Director of Development	Arizona State Museum	Tucson, AZ
Vice President and CFO	Scottsdale Cultural Council	Scottsdale, AZ
IT Assistant	Scottsdale Cultural Council	Scottsdale, AZ
Curator, Chicana/o Research Collection	Arizona State University Libraries	Tempe, AZ
Texas		
Position	Institution	Location
Communications Manager	Museum of Nature & Science	Dallas, TX
Development Writer	Dallas Museum of Art	Dallas, TX
C3 Coordinator	Dallas Museum of Art	Dallas, TX
Collections Cataloguer	The Sixth Floor Museum at Dealey Plaza	Dallas, TX
Director Design Exhibition	Witte Museum	San Antonio, TX
Registrar	The Grace Museum	Abilene, TX

Interpretation Manager	The Amon Carter Museum of American Art	Fort Worth, TX
Director of Design and Exhibitions	Witte Museum	San Antonio, TX
Assistant Librarian	McNay Art Museum	San Antonio, TX

**Table 3: Potential New Mexico Employing Institutions and Organizations**

Museums	
Name	Location
A:shiwi A:wam Museum and Heritage Center	Zuni Pueblo
Alamogordo Museum of History	Alamogordo
Albuquerque Museum of Art and History	Albuquerque
American International Rattlesnake Museum	Albuquerque
Anderson-Abruzzo Albuquerque International Balloon Museum	Albuquerque
Amistad Museum	Amistad
Anderson Museum of Contemporary Art	Roswell
Artesia Historical Museum & Art Center	Artesia
Aztec Museum & Pioneer Village	Aztec
Aztec Ruins National Monument	Aztec
Bandelier National Monument	Los Alamos
Bataan Memorial Military Museum & Library	Santa Fe
Billy the Kid Museum	Fort Sumner
Black Range Museum	Hillsboro
Blackwater Draw Museum & Archaeological Site	Portales
Bolack Electromechanical Museum	Farmington
Bolack Museum of Fish & Wildlife	Farmington
Bond House Museum	Espanola
Bosque Redondo Memorial	Fort Sumner
Bradbury Science Museum	Los Alamos
Branigan Cultural Center	Las Cruces
Capulin Volcano National Monument	Raton
Carlsbad Caverns National Park	Carlsbad
Carlsbad Museum & Art Center	Carlsbad
Casa San Ysidro	Corrales
Cerrillos Turquoise Mining Museum	Santa Fe
Chaco Culture National Historical Park	Farmington
Chimayo Museum	Chimayo
City of Las Vegas Museum	Las Vegas
Cleveland Roller Mill Museum	Mora
Columbus Historical Society Museum	Columbus
Coronado State Monument	Bernalillo
Deming Luna Mimbres Museum	Deming
E <sup>3</sup> Children's Museum & Science Center	Farmington

Eastern New Mexico University Natural History Museum  
 E.I. Couse Historic Home and Studio  
 El Camino Real International Heritage Center  
 Elizabethtown Museum  
 El Morro National Monument  
 El Rancho de las Golondrinas  
 El Rincon Trading Post and Museum  
 Ernest L. Blumenschein Home & Museum  
 Ernie Pyle House/Library  
 ¡Explora! Science Center and Children's Museum  
 Farmington Museum  
 Folsom Museum  
 Fort Union National Monument  
 Fort Selden State Monument  
 Florence Hawley Ellis Museum of Anthropology  
 Gadsden Museum  
 Gallup Cultural Center  
 Gallup Historical Museum  
 Georgia O'Keeffe Museum  
 Geronimo Springs Museum  
 Gila Cliff Dwellings National Monument  
 Governor Bent House and Museum  
 Grandma's Trading Post and Museum  
 Haa'ku Museum  
 Hacienda de los Martinez  
 Harvey House Museum  
 Harwood Museum of Art  
 Herzstein Memorial Museum  
 Historical Center for Southeast New Mexico Museum  
 Hubbard Museum of the American West  
 Indian Pueblo Cultural Center  
 Institute of American Indian Arts  
 International UFO Museum  
 Jemez State Monument  
 Jicarilla Arts and Crafts Shop Museum  
 Jonson Gallery  
 Kit Carson Home & Museum  
 Kit Carson Museum  
 Las Cruces Museum of Art  
 Las Cruces Museum of Natural History  
 Las Cruces Railroad Museum  
 Lea County Museum  
 Lincoln State Monument

Portales  
 Taos  
 Socorro  
 Elizabethtown  
 Ramah  
 Santa Fe  
 Taos  
 Taos  
 Albuquerque  
 Albuquerque  
 Farmington  
 Folsom  
 Watrous  
 Las Cruces  
 Abiquiú  
 Mesilla  
 Gallup  
 Gallup  
 Santa Fe  
 Truth or Consequences  
 Silver City  
 Taos  
 Truchas  
 Acoma Pueblo  
 Taos  
 Belen  
 Taos  
 Clayton  
 Roswell  
 Ruidoso Downs  
 Albuquerque  
 Santa Fe  
 Roswell  
 Jemez Springs  
 Dulce  
 Albuquerque  
 Taos  
 Rayado  
 Las Cruces  
 Las Cruces  
 Las Cruces  
 Lovington  
 Lincoln

Lordsburg Hidalgo County Museum	Lordsburg
Los Alamos Historical Museum	Los Alamos
Los Lunas Museum of Heritage and Arts	Los Lunas
Maxwell Museum of Anthropology	Albuquerque
McBride Museum	Roswell
Mesalands Community College's Dinosaur Museum	Tucumcari
Meteorite Museum	Albuquerque
Miles Mineral Museum	Portales
Millicent Rogers Museum	Taos
Moriarty Historical Society and Museum	Moriarty
Museum of Indian Arts and Culture	Santa Fe
Museum of International Folk Art	Santa Fe
Museum of New Mexico	Santa Fe
Museum of Spanish Colonial Art	Santa Fe
National Hispanic Cultural Center	Albuquerque
National Museum of Nuclear Science & History	Albuquerque
New Mexico Bureau of Geology & Mineral Resources Mineral Museum	Socorro
New Mexico Farm and Ranch Heritage Museum	Las Cruces
New Mexico Film Museum	Santa Fe
New Mexico History Museum	Santa Fe
New Mexico Holocaust & Intolerance Museum	Albuquerque
New Mexico Mining Museum	Grants
New Mexico Museum of Art	Santa Fe
New Mexico Museum of Natural History and Science	Albuquerque
New Mexico Museum of Space History	Alamogordo
New Mexico State University Art Gallery	Las Cruces
New Mexico State University Museum	Las Cruces
New Mexico Veterans Museum	Las Cruces
Old Coal Mine Museum	Madrid
Old Mill Museum	Cimarron
Palace of the Governors	Santa Fe
Pancho Villa State Park	Columbus
Pecos National Historical Park	Las Vegas
Percha Bank Museum	Kingston
Petroglyph National Monument	Albuquerque
Philmont Museum and Seton Memorial Library	Philmont
Picuris Visitor's Center and Museum	Picuris Pueblo
Piedra Lumbre Education & Visitor Center	Abiquiú
Pioneer Store Museum	Winston
Poeh Museum	Pojoaque Pueblo
Raton Museum	Raton
Red Rock Museum	Gallup
Roosevelt County Museum	Portales

Roswell Museum and Art Center	Roswell
Route 66 Auto Museum	Santa Rosa
Runnells Gallery	Portales
Ruth Hall Museum of Paleontology	Abiquiú
Sacramento Mountains Historical Museum & Pioneer Village	Cloudcroft
Salinas Pueblo Missions National Monument	Mountainair
Salmon Ruins	Farmington
San Ildefonso Pueblo Museum	San Ildefonso Pueblo
Santa Fe Children's Museum	Santa Fe
Santuario de Guadalupe	Santa Fe
Silver City Museum	Silver City
Site Santa Fe	Santa Fe
Smokey Bear Historical Park	Capitan
Southwest Soaring Museum	Moriarty
Space Murals Museum	Organ
Taos Art Museum	Taos
Telephone Museum of New Mexico	Albuquerque
Tinkertown Museum	Cedar Crest
The Toy Train Depot	Alamogordo
Tucumcari Historical Museum	Tucumcari
Turquoise Museum	Albuquerque
University of New Mexico Art Museum	Albuquerque
University of New Mexico Geology Museum	Albuquerque
Unser Racing Museum	Albuquerque
Villa Philmonte	Cimarron
Walatowa Visitor Center	Jemez Pueblo
War Eagles Air Museum	Santa Teresa
Western Heritage Museum & Lea County Cowboy Hall of Fame	Hobbs
Western New Mexico University Museum	Silver City
Wheelwright Museum of the American Indian	Santa Fe
White Sands Missile Range Museum	White Sands
White Sands National Monument	Alamogordo
Zuhl Geological Collection	Las Cruces
Exhibit Design and Development Firms	
Name	Location
Ideum	Corrales
Andrew Merriell & Associates LLC	Santa Fe
Museum Development Associates	Santa Fe



National Historic Parks	
Name	Location
Aztec Ruins National Monument	Aztec
Bandelier National Monument	Santa Fe
Chaco Culture National Historical Park	Farmington
El Morro National Monument	Ramah
Fort Union National Monument	Las Vegas, NM
Gila Cliff Dwellings National Monument	Silver City
Pecos National Historical Park	Santa Fe
Petroglyph National Monument	Albuquerque
Salinas Pueblo Missions National Monument	Albuquerque
Tribal Cultural Centers	
Name	Location
Acoma	Acoma
Cochiti	Cochiti Pueblo
Isleta	Isleta Pueblo
Jemez	Jemez Pueblo
Laguna	Laguna Pueblo
Nambe	Santa Fe
Ohkay Owingeh	San Juan Pueblo
Picuris	Peñasco
Pojoaque	Santa Fe
Sandia	Bernalillo
San Felipe	Santa Fe
San Ildefonso Pueblo	Santa Fe
Santa Ana	Santa Ana
Santa Clara	Española
Santo Domingo	Santo Domingo Pueblo
Taos	Taos
Tesuque	Santa Fe
Zia	Zia Pueblo
Zuni	Zuni
Apache: Jicarilla	Dulce
Apache: Mescalero	Mescalero
Navajo Nation	Window Rock, AZ
Indian Pueblo Cultural Center	Albuquerque

## **5. Institutional Readiness for the Program**

5.1 UNM has prepared for this program in 4 critical areas .....	18
5.2 All necessary resources have been secured by UNM for the program .....	18
5.3 Support for the New Degree .....	22
5.4 State approval is the only missing element .....	23
5.5 Degree program administrative plan .....	23

### **5.1 UNM has prepared for this program in 4 critical areas**

UNM has made preparations for the proposed Graduate Program in Museum Studies in 4 critical areas:

1. All necessary resources have been secured by UNM for the program
2. All key stakeholders support the program
3. There is a plan for the administrative structure of the program
4. There are a set of procedures on how students enroll and meet their degree program requirements

The first three items above are described in the present chapter; the fourth item is discussed in Chapter 8.

### **5.2 All necessary resources have been secured by UNM for the program**

*UNM faculty are prepared and committed to teach Museum Studies students*

As part of a contractual agreement, recruitment for the Museum Studies Director (faculty line) will begin immediately upon HED approval. Other faculty from all five museums on campus have committed to teaching courses.

The proposed curriculum will be enriched significantly by providing additional courses to further museum professionalism. There are many well-educated and experienced museum professionals in the Albuquerque and Santa Fe area as well as other parties as well that are available as part time instructors. Many are qualified to offer courses such as museum conservation, museum administration, visitor evaluation, museum education, and exhibit design and development. The program will draw upon this pool of expertise and offer valuable enrichment courses.

#### *Related Courses*

Museum Studies has been taught at UNM as a graduate minor. There are currently eight courses included in the program (see 8.4 Graduate Degree Program Curriculum). Four new courses have been approved by the University: Museum Interpretation, Museum Collection Management, Graduate Project, and Master Thesis.

#### *Museum Studies Reference Library and Seminar/Conference Room*

The Maxwell Museum will serve as the physical location for the program, and will provide the office space necessary for the museum studies director, program specialist, graduate students, and support facilities essential to the success of the program. Private funding has enabled the renovation of existing space in the Hibben Center and a small museum studies reference (library) collection and seminar/conference room are complete

and ready for occupation. The participating museums and teaching departments will provide laboratory facilities for thesis and project development and research. Additional classroom space is available in the Hibben Center and can also be scheduled by the Office of the Registrar. Additional instructional facilities exist in all UNM's museums.

#### *Library Impact Assessment*

The University Libraries (UL) is composed of four separate branch facilities: Zimmerman Library for education, social sciences, and humanities; Centennial Science and Engineering Library; Parish Business and Economics Memorial Library; and the Fine Arts and Design Library. In addition to the University Libraries, students and faculty also have access on north campus to the Health Sciences Library & Informatics Center and the Law Library. The UL has over 2.2 million volumes, 200 online databases, and 60,000 current journals.

UNM faculty and students can obtain materials not held by the UL free of charge through interlibrary loan, usually within a few days. The UL is now a member of the Center for Research Libraries, an organization of research libraries that provides access to a collection of almost four million rarely-held books, journals, pamphlets, newspapers and primary source materials which can be borrowed for extended time periods.

The Libraries hold strong collections of materials covering New Mexico, the Southwest, and Latin America across many disciplines. Collections in art, anthropology, life sciences, and Southwest history are particularly strong. Museum studies have not been a particular focus of collecting in the libraries. The fine arts librarians, however, have made some effort to support the museum studies component of the art curriculum. The strengths in the Center for Southwest Research (the special collections of the Libraries) include Native American studies, Chicano/Hispano studies, Spanish colonial history, and environmental history.

Table 4 below shows the number of unique titles held in the UL collection as reflected in the WorldCat database. The museum studies section of the Library of Congress classification is a fairly small area. Subject searching within WorldCat for "art museums" and other subjects expands the picture of what the UNM collections can support. As shown in the enclosed Library Impact Assessment statement, the UNM collections for museum studies are strong and expanding.

Table 6 shows selected databases available to UNM students and faculty. Most of the major relevant databases are subscribed to at UNM. The same is not true for magazines and journals in the subject area (Table 7). Subscriptions to several significant museum journals were recently canceled at UNM. While the cost of those journals is not great, in the current budget climate, the UL would be unable to add subscriptions to those titles without canceling subscriptions in some other area. Museum studies students and faculty would be greatly dependent on interlibrary loan.

The book collections of the University Libraries could presently provide moderate support for a graduate program in museum studies. The journal collections offer only basic support, which can be augmented by interlibrary loan. A one-time infusion of

\$10,000 would greatly improve the book collections in various museum subject areas. An ongoing increase of \$2,000 for library collections would ensure that collections were maintained at a higher level.

**Table 4: UNM Library Holdings in Selected Subjects in OCLC WorldCat**

Subject Area	#Titles
Museum Studies (LC class-AM)	661
Art Museums (subject)	576
Ethnological Museums (subject)	79
Heritage Tourism (subject)	70
Historic Preservation (subject)	325
Natural History Museums (subject)	52
Science Museums (subject)	38
Total Titles in Selected Areas	1,801
Total UNM Titles in WorldCat	1,523,785

**Table 5: Titles Held by UNM Peers in Selected Museum Subjects as Reflected in OCLC WorldCat, November 2009**

School (OCLC Code)	Museum Studies (LC class-AM)	Art Museums (subject)	Ethnological Museums (subject)	Heritage Tourism (subject)	Historic Preservation (subject)	Natural History Museums (subject)	Science Museums (subject)	Total Titles in Selected Areas	Total Titles Held in Library	Selected Areas as % of Total Library	Standard Deviation
U Arizona (AZU)	934	661	86	84	417	81	41	2,304	3,139,050	0.07%	-0.95054
U Arkansas (AFU)	501	188	20	28	223	33	38	1,031	883,104	0.12%	1.88359
U Colorado (COD)*	637	538	51	71	271	58	41	1,667	2,016,705	0.08%	-0.34503
U Iowa (NUI)	837	643	77	46	327	55	40	2,025	2,733,710	0.07%	-0.90627
U Kansas (KKU)*	1,144	760	85	59	253	82	42	2,425	2,310,657	0.10%	1.1122
U Kentucky (KUK)	503	427	30	61	412	50	38	1,521	1,897,614	0.08%	-0.50889
U Missouri (MUU)	536	372	45	45	308	58	26	1,390	1,992,286	0.07%	-1.1878
U Nebraska (LDL)	620	716	43	41	353	81	65	1,919	1,858,039	0.10%	1.00317
U Oklahoma (OKU)	462	308	43	56	159	52	30	1,110	1,431,651	0.08%	-0.68021
U Oregon (ORU)	653	454	59	54	412	57	46	1,735	1,730,432	0.10%	0.80593
U South Carolina (SUC)	446	365	38	46	348	46	21	1,310	1,628,172	0.08%	-0.48895
U Tennessee (TKN)	462	298	41	78	186	23	24	1,112	1,415,581	0.08%	-0.61343
U Texas (IXA)	1,357	993	108	103	567	118	54	3,300	4,217,708	0.08%	-0.63388
U Utah (UUM)	651	514	66	73	416	67	51	1,838	2,176,965	0.08%	-0.22932
U Virginia (VA@)	638	706	73	49	347	50	56	1,919	2,393,324	0.08%	-0.50705
U Washington (WAU)*	1,305	766	128	88	554	103	73	3,017	3,886,687	0.08%	-0.67425
Texas Tech (ILU)**	626	407	43	63	390	54	50	1,633	1,595,423	0.10%	0.94265
UNM (IQU)	661	576	79	70	325	52	38	1,801	1,523,785	0.12%	1.97807
Mean	721	538	62	62	348	62	43	1,837	2,157,272	0.09%	
Median	638	526	55	60	348	56	41	1,768	1,944,950	0.08%	
*Has graduate museum studies program.											
**Texas Tech is not a designated UNM peer, but has one of the few comprehensive museums studies programs in the Western states.											
OCLC WorldCat is a bibliographic database that reflects library holdings from around the world.											

**Table 6: Selected UNM Library Databases**

<b>Anthropology/Archaeology</b>
AnthroSource
Anthropological Literature
eHRAF Archaeology
eHRAF World Cultures
<b>Art</b>
Art Full Text
Art Index Retrospective
ArtBibliographies Modern
ARTstor
Avery Index to Architectural Periodicals
BHA Bibliography of the History of Art
<b>History</b>
ACLS Humanities E-Book
America: History and Life
American Indian History Online
America's Historical Newspapers
Historical Abstracts
History Cooperative
International Medieval Bibliography
<b>Life Sciences</b>
Biosis
Birds of North America
Web of Science
Wildlife and Ecology Studies Worldwide
Zoological Record
<b>General Databases</b>
Center for Research Libraries
Ebrary Academic Complete (e-book collection)
JSTOR
Lexis/Nexis Academic Universe
New York Times (1851-2004)
Project Muse

**Table 7: Selected Museum Studies Journals**

<b>Title</b>	<b>Subscribed</b>	<b>Electronic Access</b>	<b>Cost</b>
AIC News	Yes		
Curator: the Museum Journal	Yes	ArtFullText 1997-	
Forum Journal	Yes		
Forum News	Yes		
In the Field	No		\$20
Journal of Education in Museums	No		\$146
Journal of Museum Education	Yes	Publisher 2006- 2008	
Journal of Museum Ethnography	No		\$30
Journal of the American Institute for Conservation	Yes	JSTOR 1997- 2005	
Journal of the Canadian Association for Conservation	No		\$30
Metropolitan Museum Journal	No	JSTOR 1968- 2005	\$96
Museum Anthropology	Yes	Publisher 1997-	
Museum International	No	Publisher 1997- 2009	\$330
Museum Management & Curatorship	No		\$536
Museum Studies	No	JSTOR 1966- 2004	\$50
Museums Journal	Yes		
Preservation	Yes		
Total of unsubscribed titles			\$1,238

### 5.3 Support for the New Degree

Critical to the successful launch of UNM’s Graduate Program in Museum Studies is the support of all key stakeholders. The support has been obtained from the follow key stakeholders (see attached letters of support and Chapter Letters of Support11: Letters of Support)

- 1) Directors of all five museum on UNM campus:
  - a. Maxwell Museum of Anthropology
  - b. Museum of Southwest Biology
  - c. Harwood Museum of Art
  - d. UNM Art Museum
  - e. Institute of Meteoritic and Meteorite Museum
- 2) Department Chairs for each of the relevant disciplines:
  - a. Anthropology

- b. Art and Art History
  - c. Earth and Planetary Science
  - d. College of Fine Arts
- 3) External letters of support from New Mexico's Museums
  - 4) Letters from other universities

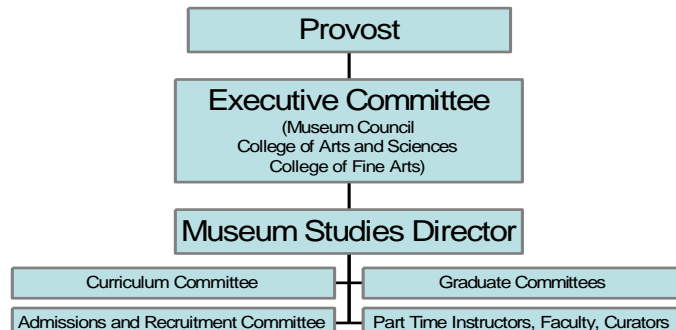
**5.4 State approval is the only missing element**

The faculty that are needed are already here and there is contractual commitment for the faculty position of museum studies director (see section 7). The curriculum is designed, the space has been renovated and is ready for occupancy, and the equipment is purchased. The funding is available and there are students anxious for the program to begin. What elements are missing? To launch this program, the museum studies director needs to be hired (upon HED approval) and the state needs to approve the program.

**5.5 Degree program administrative plan**

As an interdisciplinary program, academic governance will be by an Executive Committee consisting of the Directors of UNM's five Museums (UNM Art Museum, Harwood Museum of Art, Institute of Meteoritics and Meteorite Museum, Maxwell Museum of Anthropology, and the Museum of Southwestern Biology) and the Deans (or their designated representatives) of the Colleges of Arts and Sciences and Fine Arts. The program will exist independent of any department, but will draw on faculty from participating departments. The program will be led by a museum studies director who will be a full time (9 month) tenured (or tenure track) faculty member. The museum studies director will report to the Executive Committee on curriculum matters, manage the recruitment and admissions process, coordinate the assignment of advisors, develop and maintain relationships with other museums to facilitate internship opportunities, teach in the program, chair the program's curriculum committee, implement and maintain courses, hire part-time instructors, supervise the administrative assistant, and report annually (or more frequently if necessary) to the Museum Studies Executive Committee.

**Figure 1: Museum Studies Graduate Program Governance Chart**

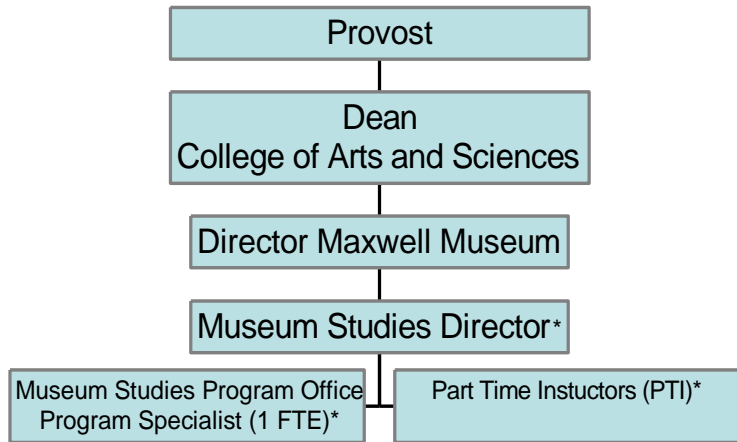


The program will be housed in the Maxwell Museum of Anthropology and supported by a program specialist (Chapter 6). The program will be structured to ensure that participating departments receive credit for courses taught by their faculty. When

appropriate, courses will be cross-listed and available to students in the participating departments.

Although this is an interdisciplinary program, it was administrative alignment within the larger UNM organizational structure. The Maxwell Museum of Anthropology will administer the program because a) it is UNM’s only museum accredited by the American Association of Museums (AAM); b) anthropology bridges the social sciences, fine arts, and natural sciences; c) the largest number of applicants is anticipated to select anthropology as their cognate discipline. It is also anticipated that the majority of students will select cognate disciplines within the College of Arts and Sciences. The Executive Committee is designed to provide overall interdisciplinary museum-based program review with representation from the museums and deans from both the College of Fine Arts and the College of Arts and Sciences. It will determine and review the Program’s policies and procedures. Because it is an interdisciplinary program the nexus of both operational and organizational structures will be at the Provost’s office. The following chart outlines the operational structure within the College of Arts and Sciences.

**Figure 2: Museum Studies Graduate Program Operational Chart**



\* new positions

What is the program development and implementation timeline?

Although much has already been accomplished, it is anticipated that it will require about 5-6 months developing the program, obtaining approvals and making requested revisions. Ideally implementation will begin during the fall semester of 2012 with the recruitment of the Museum Studies Director, web development, program promotion, and student recruitment.



## 6. Summary of Costs and Benefits

A tuition differential has been approved by Board of Regents to help support the proposed UNM Museum Studies program. The differential is necessary to meet projected program costs and is consistent with tuition rates for other Museum Studies programs. The financial burden on students will be ameliorated by graduate student assistantships from research grants and contracts, the Hibben Trust, paid internships and scholarships from participating institutions, and other sources of internal and external support. The table below compares tuition rates based on enrollment for nine or more credit hours for similar graduate programs nationally, and at neighboring state universities that offer similar programs. Even with the tuition differential included in the table below, the tuition for the UNM Museum Studies program is well below national and regional rates.

Museum studies tuition comparison

Institution	Degree	Resident Tuition*	Non-Resident Tuition*	9hrs Tuition & fees- Resident	9hrs Tuition & fees- Non-Resident
Georgetown University	M.A. in Art and Museum Studies		\$1,577	\$29,913	\$29,913
University of Colorado, Boulder	M.S. in Museum & Field Studies	\$496	1,336	5,215	12,775
New York University	M.A. Museum Studies		1,272	12,753	12,753
University of Florida	M.A. in Museum Studies	389	1,070	4,093	10,616
The George Washington University	M.A. in Museum Studies		1,175	10,589	10,589
Arizona State University	M.A. in Anthropology, Certificate in Museum Anthropology. Converting to M.A. in Museum Studies starting in fall 2011	608	919	4,425	8,441
University of Washington	M.A. in Museology	502	1,113	3,817	8,263
University of New Mexico	M.A./M.S. Museum Studies	400	955	3,601	8,591
Texas Tech University	M.A. in Museum Science	232	542	3,270	6,059
Brigham Young University	Certificate in Museum Practices in conjunction with Anthropology M.A.	(LDS) 310	(Non-LDS) 620	2,790	5,580

\*1-hour tuition rate, fees not included.

The tuition differential is \$148.40 per credit hour, which is based on the Anderson School of Management. Enrollment projections call for 8 – 10 graduate students in the program the first year, 16 – 18 in year two, and 25 by year three. The return to the program is projected to be \$10,684 per semester, or \$21,369 for year one. In the Fall of 2011 the provost funded a \$5,000 Special Administrative Component (SAC) for an existing UNM faculty member to support the program. The Maxwell Museum will provide part time clerical support, IT, and other program costs as the program matures. The SAC will provide temporary leadership until the contractually obligated funding for the full-time faculty museum studies director is approved and the position filled. Two UNM professors, Dr. Joyce Szabo and Dr. Tim Lowery, are already serving in this capacity.

**Table 8: Expected number of students for the first six years**

Year	New Graduate Students	Returning & Continuing Students	Total Students	Credit Hours
1	8	0	8	144
2	9	8	17	282
3	10	14	24	315
4	10	15	25	330
5	10	15	25	330
6	10	15	25	330

Projected **graduate enrollment and graduate student credit hours** (including thesis-project hours) based on estimated average time of 2.5 years to completion.

Additional fiscal support is anticipated from private donors, Extended University, and course fees. Extended University has projected seed funding and recurrent revenue to be \$11,530 – 27,183 annually. At least three of the courses (MSST 407/507, 475/575 and 476/576) may require course fees depending on specific instructional requirements and the number and the number and distance of field trips. However, course fee revenue is not included in the table “Projected Graduate Program Cost Estimates and Resources” because these fees will have to be determined by the instructors. Although course fees have not yet been determined, they are projected to average approximately \$75 per course. Private donors already have contributed \$27,000 to renovate space and provide equipment for the Program, and the Hibben Trust has pledged two recurring graduate assistantships with Native American and Southwest students receiving priority for funding.

*Projected Cost:*

**Table 9: Revenues and Extramural Contributions**

Revenues	Year 1	Year 2
Tuition differential revenue	\$21,369	\$42,738
Course Fees	\$1,800	\$2,700
Extended University	\$11,530 – \$27,183	\$11,530 – \$27,183
Total revenues	\$34,699 - \$50,352	\$56,968 - \$72,621
Committed Extramural Contributions		
Facilities renovation and equipment (One time only private donors)	\$27,000 (complete 1/30/12)	
Two recurrent Graduate Fellowships (Hibben Trust)	\$28,000	\$28,000
Total contributions	\$55,000	\$28,000

A half-time program specialist (0.5 FTE @ \$21,000 annually exclusive of benefits) will be necessary to support faculty and students, track graduate applications, maintain graduate student files, provide administrative coordination, and coordinate with the larger administrative demands of the University. The museum studies director will require equivalent career development support for faculty and staff in comparable programs and departments. Typically this includes travel to attend the annual meeting of the American Association of Museums and/or an appropriate cognate discipline.

There is a contractual agreement between the College of Arts and Sciences and the Director of the Maxwell Museum committing the college to fund a new faculty position to lead the Museum Studies Program. Because the Maxwell Museum is a museum of anthropology, this new faculty hire should be an Anthropologist (or hold a Ph.D. in closely related discipline) committed to interdisciplinary museum education and research. The candidate will stand for tenure (or be tenured) in Anthropology, or Museum Studies, and support the Department of Anthropology by teaching at least one course a year in Anthropology as well as teaching museum studies courses and serving as museum studies director for museum studies program. The museum studies director may also teach the one new required course (Museum Interpretation).

**Table 10: Budget**

Category	Item	FY12		FY13		FY14	
		Quant	Cost	Quant	Cost	Quant	Cost
<b>Personnel</b>							
	Faculty Director	1.00	\$ 5,000 (SAC)	1.00	\$ 5,000 (SAC)	1.00	\$ 65,000 (I&G)
	Graduate Student Asst	0.00	\$ 0	2.00	\$ 28,000	2.00	\$ 28,000
	Program Specialist (Gr 12)	1.00	\$ 0	0	\$ 0	0.50	\$ 21,000
	Part-Time Instruction	0	\$ 0	2.00	\$ 10,000	3.00	\$ 15,000
	<b>SubTotal</b>		\$ 5,000		\$ 43,000		\$ 129,000
<b>Fringe</b>							
	Associate Professor		\$ 0	0	\$ 0	1.00	\$ 20,150 (I&G)
	Program Specialist		\$ 0	0	\$ 0	0.50	\$ 7140
	<b>SubTotal</b>		\$ 0		\$ 0		\$ 27,290
<b>Supplies</b>							
	Software		\$ 0		\$ 2,500		\$ 1,500
	Office Supplies		\$ 0		\$ 4,000		\$ 3,000
	Instructional Materials		\$ 0		\$ 5,000		\$ 2,000
	<b>SubTotal</b>		\$ 0		\$ 11,500		\$ 6,500
<b>Equipment</b>							
	MacPro workstation	1	\$ 0		\$ 5,675		\$ 0
	Video Projector	1	\$ 0		\$ 1,000		\$ 0
	Office Furniture		\$ 0		\$ 4,000		\$ 0
	Telephone & Fax	2	\$ 0		\$ 250		\$ 0
	<b>SubTotal</b>		\$ 0		\$ 10,925		\$ 0
<b>Travel</b>							
	Prof. Dev.		\$ 0		\$ 0		\$ 5,000
	<b>SubTotal</b>		\$ 0		\$ 0		\$ 5,000
<b>Other</b>							
	Web & IT		\$ 5,000		\$ 5,000		\$ 5,000
	Postage		\$ 100		\$ 100		\$ 100
	Telephone		\$ 720		\$ 720		\$ 720
	AAM Membership		\$ 500		\$ 500		\$ 500
	Facility Remodeling		\$ 25,000				
	<b>SubTotal</b>		\$ 31,320		\$ 6,320		\$ 6,320
<b>Total Direct Costs (estimated)</b>			<b>\$ 36,320</b>		<b>\$ 71,745</b>		<b>\$ 174,110</b>
<b>Revenues</b>							
Instruction and General (I&G)						\$ 85,150	
Tuition differential revenue			\$ 0		\$ 21,369		\$ 42,738
Private Donors (received)			\$ 27,000		unknown		unknown
Hibben Trust			\$ 0		\$ 28,000		\$ 28,000
Course Fees			\$ 0		\$ 1,800		\$ 2,700
Extended University			\$11,530-\$27,183		\$11,530-\$27,183		\$11,530-\$27,183
<b>Projected Revenue &amp; Funding</b>			<b>\$38,530-\$54,183</b>		<b>\$62,699-\$78,352</b>		<b>\$170,118-185,771</b>
<b>Projected Balance</b>			<b>\$ +2,210 - \$ +17,863</b>		<b>\$ -9,045 - \$ +6,607</b>		<b>\$ -3,992 - \$ +11,661</b>

**Table 11: Projected Museum Studies Graduate Program Cost Estimates and Resources**  
**Institution: The University of New Mexico**  
**Proposed Program: Graduate Museum Studies**

**Projected Graduate Program Cost Estimates and Resources**

ESTIMATED REVENUES	Year 1		Year 2		Year 3		Year 4		Year 5		Year 6	
	Existing	New	Existing	New	Existing	New	Existing	New	Existing	New	Existing	New
Projected University I&G or Tuition		11,530 to 27,183	11,530 to 27,183	21,369	32,899 to 48,552	106,519	139,418 to 155,071	3,882	143,300 to 158,953	2,200	145,520 to 161,173	
External Grants and Contracts												
Other		27,000		29,800	29,800	900	30,700		30,700		30,700	
<b>TOTAL REVENUE</b>	38,530 to 54,183		\$62,699 to \$78,352		\$170,118 to \$185,771		\$174,000 to \$189,653		\$176,220 to \$191,873		\$176,220 to \$191,873	
ESTIMATED EXPENSES	Year 1		Year 2		Year 3		Year 4		Year 5		Ye	
	Existing	New	Existing	New	Existing	New	Existing	New	Existing	New	Existing	New
Salaries and/or benefits (Faculty & Staff)		5,000	5,000	38,000	38,000	118,290	156,290		156,290		156,290	
Learning Resources												
Equipment				10,925								
Facilities & modifications		25,000										
Other		6,320	6,320	11,500	12,820	5,000	17,820		17,820		17,820	
<b>TOTAL EXPENSES</b>	36,320		71,745		174,110		174,110		174,11		174,110	
<b>DIFFERENCE (Rev.-Exp.)</b>	+2,210 to +17,863		-9,046 to +6,607		-3,992 to +11,661		-110 to +15,543		+2,110 to +17,763		+2,110 to +17,763	
ESTIMATED IMPACT OF NEW PROGRAM	Year		Year 2		Year 3		Year 4		Year 5		Ye	
	+2,210 to +17,863		-9,046 to +6,607		-3,992 to +11,661		-110 to +15,543		+2,110 to +17,763		+2,110 to +17,763	
FTE Enrollment	8		17		24		25		25		25	
Projected Annual Credits Generated	144		282		315		330		330		330	
Tuition Generated	\$36,245		\$70,979		\$79,288		\$83,061		\$83,061		\$83,061	

**Table 12: Museum Studies Graduate Projected Revenues Models Provided by Extended University (2010)**

<b>Graduate Museum Studies Projected Revenue Models Provided by Extended University (2010)</b>					
	Semester #1		Subsequent Semesters		
	per section	6 sections	per section	6 sections	
<b>Scenario #1 - Graduate Online Courses</b>					
Prior to Scheduling:					
Seed Funding (per section)	\$ 2,500.00	\$15,000.00	\$ -	\$ -	
At time of Scheduling:					
Seed Funding (per section)	\$ 2,500.00	\$15,000.00	\$ -	\$ -	
Development Stipend	\$ 2,000.00	\$12,000.00	\$ -	\$ -	
At Census Date (first semester):					
Instruction Support to MS	\$ 4,000.00	\$24,000.00	\$ 4,000.00	\$ 24,000.00	
Revenue Sharing to MS	\$ 530.60	\$ 3,183.60	\$ 530.60	\$ 3,183.60	note 1,5
<b>Total funds to Museum Studies - Semester 1</b>	<b>\$ 11,530.60</b>	<b>\$69,183.60</b>	<b>\$ 4,530.60</b>	<b>\$ 27,183.60</b>	
<b>Scenario #2 - Graduate ITV Courses</b>					
Prior to Scheduling:					
Seed Funding (per section)	\$ -	\$ -			
At time of Scheduling:					
Seed Funding (per section)	\$ -	\$ -			
Development Stipend	\$ -	\$ -			
At Census Date (first semester):					
Instruction Support to MS	\$ 3,000.00	\$18,000.00	\$ 3,000.00	\$ 18,000.00	
Revenue Sharing to MS	\$ 530.60	\$ 3,183.60	\$ 530.60	\$ 3,183.60	note 1,5
<b>Total funds to Museum Studies - Semester 1</b>	<b>\$ 3,530.60</b>	<b>\$ 21,183.60</b>	<b>\$ 3,530.60</b>	<b>\$ 21,183.60</b>	
<b>Scenario #3 - Graduate Hybrid Courses</b>					
Prior to Scheduling:					
Seed Funding (per section)	\$ -	\$ -			
At time of Scheduling:					
Seed Funding (per section)	\$ -	\$ -			
Development Stipend	\$ -	\$ -			
At Census Date (first semester):					
Instruction Support to MS	\$ -	\$ -	\$ -	\$ -	
Revenue Sharing to MS	\$ -	\$ -	\$ -	\$ -	
<b>Total funds to Museum Studies - Semester 1</b>	<b>\$ -</b>	<b>\$ -</b>	<b>\$ -</b>	<b>\$ -</b>	note 4
<b>Scenario #4 - Live Certificate Courses</b>					
Tuition					
	\$ 3,600.00	\$21,600.00	\$ 3,600.00	\$21,600.00	note 2
EU support	\$ 1,200.00	\$ 7,200.00	\$ 1,200.00	\$ 7,200.00	note 3
Instruction Support	\$ 2,100.00	\$12,600.00	\$ 2,100.00	\$12,600.00	note 3
<b>Total funds to Museum Studies - Semester 1</b>	<b>\$ 2,100.00</b>	<b>\$12,600.00</b>	<b>\$ 2,100.00</b>	<b>\$12,600.00</b>	

notes:

- 1 Assumes 10 students per section offered
- 2 Tuition is variable through Extension, and is determined by Museum Studies. The tuition here is for representation only.
- 3 EU retains 1/3 of tuition revenue to fund scheduling and other support costs, with the balance credited to Museum Studies.
- 4 Hybrid courses (less than 75% online) do not generate funding for EU and therefore cannot participate in the EU funding model. EU does support hybrid courses for development.
- 5 Revenue Sharing is a formula that takes total tuition generated, less the instruction funding, x 60%.

## 7. Assessment of Operations and Impact

7.1 Expect overhead costs .....	31
7.2 Human Resource Plan .....	31

### 7.1 Expect overhead costs

What technology, media, equipment and instructional supplies are needed to reach these learning outcomes? Are these resources available? What is the estimated cost?

Considerable computing, scanning and digital imagery resources already exist in several of UNM's museums and cognate departments. UNM Museums' existing collection and laboratory facilities are integral assets for practica and thesis and project research. No new research facilities are required at the present time.

To keep pace with contemporary and rapidly evolving museum technology, the program would like to continue to acquire high performance high resolution hardware and software to train students in their application to collection and database management and collection acquisition, accessibility, and security. Museums are under increasing pressure to make their collections accessible in digital formats. The program should include instruction and training in the policies and procedures for digitizing museum objects, digitizing associated contextual data, producing digital images for long-term archives, and the use of images and data for collection management, exhibits, and outreach presentation. To balance theory with practice, students need to learn how to produce, analyze and archive digital images. The program will look to industry, private donors, foundations and trusts, and local, state, federal funding programs to continue to build and maintain its assets for student support and program enhancements.

#### *Student Support Services*

The program will need to acquire a teaching and advanced study library consisting of select Museum Studies references, instructional CDs for classroom use, and institutional American Association of Museums membership, and related periodicals. A departmental laptop and power point and video projectors and miscellaneous office equipment will also be required. The total estimated cost of these acquisitions is \$6,500.

Provide a rationale for any course fees or other expenses (in addition to tuition) that students will be expected to cover.

No course fees have been identified at this time. However, course fees are likely to be required for specific classes. A course fee request form ([registrar.unm.edu](http://registrar.unm.edu)) will be submitted as the courses are developed by specific instructors.

### 7.2 Human Resource Plan

One new full time (9 month) faculty member will be required to serve as museum studies director. The minimum qualifications for this position are a Ph.D. in Anthropology (or closely related discipline) and at least three years of museum experience specifically focusing on interdisciplinary education, research, and public service within a museum context. The

successful candidate may be tenured in Anthropology or Museum Studies, but should be capable of passing tenure review, in Anthropology (or a closely related discipline).

*Workload Effects of current Faculty and Support Staff*

The four required core curriculum classes (Museum Practices, Museum Interpretation, Museum Collection Management, and Seminar in Museum Methods or Practicum: Museum methods) will be taught annually on a regularly rotating basis to assure that students are able to complete their course requirements in two years. The introductory graduate course (Museum Practices - MSST 407/507) is already offered annually by Dr. Joyce Szabo in the Department of Art and Art History. If for some reason, Dr. Szabo is unable to offer the class, the class will default to the Museum Studies Museum studies director. The Museum studies director should be capable of teaching Museum Interpretation and at least one Advanced Seminar or Practicum every semester. An additional Seminar in Museum Methods and Practica (MSST 585 and 586) will continue to be taught by faculty and qualified staff in all five of UNM's museums and by qualified faculty in cognate departments on a voluntary basis. Maxwell Museum faculty and staff developed Museum Collection Management and, along with faculty and staff from the Museum of Southwestern Biology and Art Museum, are committed to formalize this interdisciplinary course and offer it on an annual basis. Consistently offering practica, teaching advanced seminars, advising and mentoring students, and offering Museum Collection Management annually will have its largest impact on current faculty, curators, and supporting staff of all UNM's museums. Because the largest numbers of students are expected to select anthropology as their cognate discipline, it is anticipated that the Maxwell Museum will be most heavily impacted.

There is a contractual agreement between the College of Arts and Sciences and the Director of the Maxwell Museum committing the college to fund a new faculty position to lead the Museum Studies Program (Form B, Attachment 4). Because the Maxwell Museum is a museum of anthropology, this new faculty hire should be an Anthropologist (or hold a Ph.D. in closely related discipline) committed to interdisciplinary museum education and research. The candidate will stand for tenure (or be tenured) in Anthropology or Museum Studies and support the Department of Anthropology by teaching at least one course a year in Anthropology as well as teaching museum studies courses and serving as Museum studies director for museum studies program. The Museum studies director may also teach the one new required course (Museum Interpretation). Beginning in FY14 a full time (9 mo) faculty director and a half-time program specialist (0.5 FTE @ \$21,000 annually exclusive of benefits) will be necessary to support faculty and students, track graduate applications, maintain graduate student files, provide administrative coordination, and coordinate with the larger administrative demands of the University. At the recommendation of the UNM Provost, and subsequently approved by the UNM Board of Regents, the Program will carry a tuition differential and the Program's projected tuition differential will be sufficient to fund the program specialist and related program costs.

The proposed curriculum will be enriched significantly by providing additional courses to further museum professionalism. There are many well-educated and experienced museum professionals in the Albuquerque, Santa Fe, and other New Mexico campuses that are available as part time instructors. Many are qualified to offer resident and DL specialty courses such as museum conservation, museum administration, visitor evaluation, museum education, and exhibit design



and development. The program will draw upon this pool of expertise and offer valuable enrichment courses.

*Faculty and Staff Development*

The museum studies director will require equivalent career development support for faculty and staff in comparable programs and departments. Typically this includes travel to attend the annual meeting of the American Association of Museums and/or an appropriate cognate discipline such as the American Anthropological Association.

## **8. Admission Criteria and Requirements for Master’s Degree (M.A. or M.S.)**

Application and Admissions .....	34
8.2 Degree Requirements .....	34
8.3 Learning Outcomes .....	37
8.4 Graduate Degree Program Curriculum .....	38

The Museum Studies Program is designed to provide students academic training in essential aspects of museology. The program offers a 33 credit hour interdisciplinary Master’s degree, a 15 credit hour graduate minor, and a 15 credit hour undergraduate professional certificate in Museum Studies. It is designed to prepare students for a variety of museum and museum related occupations, including: collections managers, registrars, museum educators, exhibit developers, park interpreters, and administrators.

### **8.1 Application and Admissions**

Application and admissions criteria and process: The Museum Studies Application Review Committee will begin reviewing complete graduate applications on the first Friday of January and will not accept any files or additional information after that date. It is up to the applicant to allow adequate time (6 to 8 weeks prior to the department deadline) for processing and mail delivery of the application. The committee will not accept faxed or Xeroxed copies of any information.

The following materials must be included to complete the application file: three letters of recommendation, a letter of intent, official transcripts, GRE scores, the University of New Mexico graduate school application, Registration Information Form and application fee.

Applicants to the graduate program must identify their particular area of interest and their academic and professional goals in a letter of intent directed to the Museum Studies Graduate Application Review Committee. GRE scores (verbal/analytical/quantitative) and three letters of recommendation also are required as part of the application which will be reviewed by the Museum Studies Graduate Application Review Committee, in consultation with the department pertinent to the student's discipline if appropriate. Acceptance into the program will depend upon: the number of openings available for new graduate students; the applicant’s potential as indicated by the materials submitted with the application; and agreement by an appropriate faculty person to act as advisor to the student. No student will be accepted into the program unless he or she can be placed under the direction of a faculty advisor who will help to plan the student’s program. Students admitted to the program may change their advisor, subject to prior approval by the new advisor. Continuation in the program will require progress at a rate deemed satisfactory by the student’s graduate advisor in consultation with the student’s graduate committee, which will review progress each year. General departmental requirements are described below.

### **8.2 Degree Requirements**

The proposed UNM curriculum is a 33 credit hour interdisciplinary graduate program. The curriculum builds upon several core courses already offered at UNM: MSST (407/507), MSST (485/585), and (MSST 486/586). The proposed program is designed to give students academic

training in all aspects of museology and their chosen cognate discipline. Course work may include field projects related to the student's chosen specialization. It will require the addition of one new core course (museum interpretation) that will be offered every year, and formalizing another course (museum collection management).

*Degree options:* Students accepted to the graduate program may choose between two courses of study - a thesis track (Plan 1) and a project track (Plan 2). All students must have a firm grounding in museum studies through the required core museology curriculum as well as specialization in a cognate discipline. Students in either the thesis or project tracks will be required to complete one museum practica. Graduate course work may include field projects related to the student's chosen specialization. Course work may include field projects related to the student's chosen cognate discipline in an area of specialization.

**Table 13: Course Requirements**

Thesis Plan (Plan 1)	Cr. Hrs.	Project Plan (Plan 2)	Cr. Hrs.
Museum Practices MSST (407/507)	3	Museum Practices MSST (407/507)	3
Museum Interpretation (MSST 475/575)	3	Museum Interpretation (MSST 475/575)	3
Museum Collection Management (MSST 476/576)	3	Museum Collection Management (MSST 476/576)	3
Seminar in Museum Methods (MSST 485/585) Δ	3	Seminar in Museum Methods (MSST 485/585) Δ	3
Practicum: Museum Methods (MSST 486/586) Δ	3	Practicum: Museum Methods (MSST 486/586) Δ	3
Cognate Discipline Hours (500+)**	12	Cognate Discipline Hours (500+)**	15
Total course hours:	27	Total course hours:	30
Thesis Hours MSST (599)	6	Project hours (598)	3
Minimum credits required:	33	Minimum credits required:	33

\*\* Cognate hours may also include practicum work, field methods courses, and up to six hours of \*300 or \*400 level classes, if appropriate. Cognate hours may be taken in more than one department or school. Some Museum courses may count as cognate hours with advisor approval. Δ Six (6) credit maximum.

Museum Practices (MSST 407/507) emphasizes theory and practices pertaining to collections, documentation and care of museum collections, the importance of informal learning in museum contexts, and the role museums play in serving the public. Course work may include field projects related to the student's chosen cognate discipline in an area of specialization. Museum Interpretation (MSST 475/575) is a new course designed to explore the theory behind the development of exhibitions, and the representation of people within museums especially pertaining to the diverse cultures of New Mexico, museum education and public programming. Museum Collection Management (MSST 476/576), has already been offered periodically at UNM as a topics course and has been formalized to be a regular offering in the instructional cycle. It will emphasize how to collect, catalog, and care for museum collections as well as the role of research and informal object based learning in museums. The graduate requirements also include successful completion of two existing museum studies courses, Seminar in Museum Methods (MSST 485/585) and Practicum: Museum Methods (MSST 486/586). The Seminar in

Museum Methods (MSST485/585) is designed to explore theoretical and practical work in specific museum problems, topics and themes.

The decision to award either a Master of Arts or Master of Science degree will be determined on a case-by-case basis. The determination will be made by the student's graduate committee on the basis of the nature of the student's thesis or project, the specific graduate courses taken by the student, and the requirements of the student's cognate department. For example, the Department of Anthropology requires two additional math or science classes (Biology, Chemistry, Statistics, etc.) in addition to its Masters of Arts requirements if a student chooses the Master of Science degree option. Students enrolled in the Museum Studies Graduate Program would be expected to meet these same course requirements if their cognate discipline is Anthropology and they select the M.S. rather than an M.A. option. The determination will be made by the student's graduate committee and must be approved by the Museum studies director. The existing graduate minor in Museum Studies will continue to be offered and remain unchanged.

Students in either the Thesis or Project Programs will be required to complete one museum practica. The practica (MSST 486/586) are 3 credit internships that include at least 150 hours of experience or service in a museum or museum related facility or program. The practicum is an opportunity for students to gain hands-on experience in some aspect of museum work. Practica can be offered through the Harwood Museum of Art, Institute of Meteoritics, Maxwell Museum of Anthropology, Museum of Southwestern Biology, the UNM Art Museum, and other UNM collections and programs. Students also will be encouraged to conduct practica at an off-campus cooperating institution at local museums such as the New Mexico Museum of Natural History, the National Hispanic Cultural Center, Indian Pueblo Cultural Center, Albuquerque Biological Park (Zoo, Aquarium, Botanic Gardens), Museum of Spanish Colonial Art, Museum of Indian Arts and Culture, Museum of International Folk Art, Albuquerque Balloon Museum, Wheelwright Museum of the American Indian, as well as at other regional and national museums such as the Smithsonian Institution, Chicago's Field Museum, and the American Museum of Natural History. In the event that the student has had extensive museum work experience prior to entering the program, the internship requirement (MSST 586) may be waived by the student's graduate committee. However, if MSST 585 is waived, the total number of credit hours (33) required to complete the degree requirements will remain the same. All students must have a firm grounding in museum studies through the required core museology curriculum as well as specialization in a cognate discipline.

The practicum (MSST 586) is a 3 credit internship that includes at least 150 service or participatory hours. The practicum is an opportunity for students to gain hands-on experience in some aspect of museum work. Practica are offered through the Harwood Museum of Art, Institute of Meteoritics, Maxwell Museum of Anthropology, Museum of Southwestern Biology, the UNM Art Museum, and other UNM collections and programs. Students are also encouraged to conduct practica at off-campus cooperating institutions. In the event that a student has extensive museum experience prior to entering the Program, the internship requirement (MSST 586) may be waived by the student's graduate committee.

In addition to the core curriculum, the graduate requirements also include successful completion of Seminar in Museum Methods (MSST 485/585) and Practicum: Museum Methods (MSST

486/586). The Seminar in Museum Methods (MSST485/585) is designed to explore theoretical and practical work in specific museum problems, topics and themes. Requirements are for both the thesis and project tracks are listed below:

### **8.3 Learning Outcomes**

The proposed Museum Studies Graduate Program offers an opportunity for individuals with a Bachelor's Degree in Anthropology, Art History, Biology, Classics, Education, Fine Arts, Geological Sciences, Geography, History, or other disciplines to gain expertise in museum theory and practice, as well as advanced topical knowledge in a chosen discipline (or specialty). Students will be expected to contribute and present new and original knowledge to the museum community and their cognate discipline upon completing either a Master's thesis or a Master's project. The curriculum is designed to equip students with a range of museum skills and enable them to tailor learning to their career objectives. Core learning objectives will dovetail with the student's cognate discipline to include: a) collection management - acquisition, organization, stabilization, conservation, and research, b) security, risk management, and environmental controls, c) exhibit interpretation and development d) museum law (Endangered Species Act, Marine Mammal Act, Native American Graves and Repatriation Act, UNESCO Accords, etc.), e) museum ethics and professionalism, f) serving underrepresented groups, g) informal and object-based education in museum contexts and interpretation, and h) other topics relevant to museum theory and practice.

*What instructional model(s) will be used in presenting the program?*

University faculty and museum staff will teach museum courses and seminars with contributions from museum professionals and specialists throughout the region. The core curriculum will provide a firm grounding in museum history and theory with special emphasis on current ideas, issues, and practices confronting contemporary museum professionals. UNM's museums will serve as laboratories for application of learned concepts and techniques. Learning will extend beyond UNM to other institutions through field trips and the internship requirement. Coursework in the student's cognate discipline should be completed in one or more departments outside the Museum Studies Program. The proposed program takes advantage of the expertise existing in UNM's museums by combining their strengths with an integrated interdisciplinary museology curriculum.

*Measuring Learning Outcomes*

All prospective students will be asked to submit with their applications to the program a statement of their goals and interests as a baseline of expectations that will be used to assess the extent to which their goals are met. Assessment will be made based on exit interviews to evaluate whether students have realized their goals in achieving an adequate level of competency in knowledge and skills. Learning outcomes will be measured by successful completion of course requirements with a grade of B or higher, a comprehensive examination, completion of an internship, and successful completion and defense of a project or thesis. All degree candidates will be required to take a comprehensive examination. The examination will be given in two stages: a written exam followed by an oral exam taken within two weeks of each other. The oral exam requirement may be waived only by full consent of the student's graduate committee. A project or thesis that develops an original product or process of demonstrable value to museum

professionals must be developed in consultation with the student's committee. The student's committee will find the project satisfactory or unsatisfactory, and may recommend additional steps for the student to correct any deficiencies in the project and/or the paper. The quality of the comprehensive examination and master's thesis and projects will be assessed by the student's graduate committee, which will evaluate each student's level of content knowledge.

#### **8.4 Graduate Degree Program Curriculum**

Core Courses (Project and Thesis Tracks):

MSST 507 Museum Practices 3  
MSST 575 Museum Interpretation 3  
MSST 576 Museum Collection Management 3  
MSST 585 Seminar in Museum Methods 3  
MSST 586 Practicum: Museum Methods 3

Project Track (Plan 2)

Cognate Discipline Hours (500+)\* 15  
Total course hours: 30  
Project hours (MSST 598) 3  
Minimum credits required: 33

Thesis Track (Plan 1)

Cognate Discipline Hours (500+)\* 15  
Total course hours: 27  
Thesis hours (MSST 599) 6  
Minimum credits required: 33

\* Cognate hours may also include practicum work, field methods courses, and up to six hours of \*300 or \*400 level classes, if appropriate. Cognate hours may be taken in more than one department or school. Some Museum courses may count as cognate hours with advisor approval.

#### ***Graduate Minor in Museum Studies (UNM Catalog 2008-09:460).***

The Graduate Minor in Museum Studies is intended to be an interdisciplinary program that emphasizes mentoring and collaborative opportunities through a combination of structured work experiences, academic instruction, supervised internships, and short-term professional workshops and training courses. Additional emphasis will be placed on collection care, management, and preservation.

The Graduate Minor in Museum Studies will require 9 hours of course work and 6 hours of internship for a total of 15 hours.

Internship opportunities will be created at a number of museums on the University of New Mexico campus and around the state. Each internship will have a specific relation to the needs of

the institution and its collections. Students will be able to apply for internships at specific museums. The application process will be competitive and based on selection criteria established by the specific internship's requirements.

The minor is available to any student enrolled in a graduate degree program. Once completed the minor designation will appear on a student's transcript.

The minor is distributed as follows:

6 hours of required Core Courses  
MSST 507, Museum Practices (3)  
MSST 585, Seminar in Museum Methods (3)

3 hours of Museum Studies Topics courses  
ARTH 529, Topics in Art History (3)

6 Hours of Internship  
MSST 586, Practicum: Museum Methods (3)  
*Museum Studies (MSST)*  
(directly from UNM Catalog 2008-09:472).

311./511. Material Culture in America. (3)  
(Also offered as AMST 311/511.) This course covers the theory and practice of material culture study as it has been used to define American culture. Course content includes architecture, technology, religious art and artifacts, literary, folk and "fine" arts.

407./507. Museum Practices. (3 to a maximum of 6) Δ  
(Also offered as ANTH 402, ARTH 407.) History, philosophy and purposes of museums. Techniques and problems of museum administration, education, collection, exhibition, conservation and public relations. {Offered upon demand}

485./585. Seminar in Museum Methods. (3 to a maximum of 6) Δ  
(Also offered as ARTH, ANTH 485.) Theoretical and practical work in specific museum problems. Prerequisite: 407 or ANTH 402. {Offered upon demand}

486./586. Practicum: Museum Methods. (3)  
(Also offered as ARTH, ANTH 486.) Practicum in museum methods and management. Prerequisite: ARTH 407 or ANTH 402. {Offered upon demand}

507./407. Museum Practices. (3 to a maximum of 6) Δ  
(Also offered as ANTH 582, ARTH 507.) History, philosophy and purposes of museums. Techniques and problems of museum administration, education, collection, exhibition, conservation and public relations. {Offered upon demand}

511./311. Material Culture in America. (3)

(Also offered as AMST 311/511.) This course covers the theory and practice of material culture study as it has been used to define American culture. Course content includes architecture, technology, religious art and artifacts, literary, folk and “fine” arts.

585./485. Seminar in Museum Methods. (3 to a maximum of 6) Δ

(Also offered as ARTH, ANTH 585.)

Prerequisite: 407 or ANTH 402. {Offered upon demand}

586./486. Practicum: Museum Methods. (3 to a maximum of 6) Δ

(Also offered as ARTH, ANTH 586.)

Prerequisite: ARTH 585 or ANTH 585. {Offered upon demand}

*New Courses Approved Spring 2010:*

MSST 475./575. Museum Interpretation (3)

Public education within museum contexts including exhibit research, planning, development, production; traveling trunks, booklets, outreach, public programming, evaluation, and digital and virtual applications. {Offered every academic year}

MSST 476./576. Museum Collection Management (3)

Method, theory, and practice of collection management including acquisitions, law, ethics, organization, storage and retrieval, environmental controls, security, stabilization, use, risk management, and data management. {Offered every academic year}

MSST 598. Graduate Project. (1-6, no limit) Δ

Projects must be museum based. They may be exhibits, films, educational programs, collection curation, field collection and analysis, or other museum endeavors. All projects must be original contributions to museums, or the museum profession, and demonstrate contemporary knowledge of museum methods, theory and practice.

Offered on a CR/NC basis only.

MSST 599. Master’s Thesis. (1-6, no limit) Δ

Limited to graduate majors in the master’s program.



## **9. Accreditation Plan**

The proposed program will be subject to Academic Program Review (APR) as part of UNM's larger accreditation process. Program review will be coordinated through the office of the Vice Provost for Academic Affairs in concert with UNM's Accreditation Director. Although there is no formal accreditation program for Museum Studies programs *per se*, the program will be subject to additional review as part of the larger American Association of Museum's reaccreditation review of the Maxwell Museum of Anthropology, where the program will be centered.

## **10. Additional Information**

a. Provide any additional information needed to make the case for development of a proposal.

The need for a graduate degree program in Museum Studies is also documented in the *Strategic Plan, Maxwell Museum of Anthropology, April, 2008* and *UNM Museums and Collections Policy, October 10, 2008* a special report prepared at the request of UNM President David Schmidley to address UNM Internal Audit: *Assessment of Art Collection Management Report 2007-34*.

December 10, 2008 (Revised March 4, 2012, version 16).

### **10.1 WWW Sources:**

American Association of Museums  
(<http://iweb.aamus.org/Membership/MemberDirectorySearch.aspx>)

Bureau of Labor Statistics  
(<http://www.bls.gov/oco/ocos065.htm>)

Museumstuff.com  
(<http://www.museumstuff.com/museums/usa.php>)

U.S. Census  
(<http://factfinder.census.gov/>)

### **10.2 UNM Museum Studies Working Group:**

Carl Agee, Ph.D.  
Director, Institute of Meteoritics and Meteorite Museum  
College of Arts and Sciences  
Email: [agee@unm.edu](mailto:agee@unm.edu)  
Phone: 505 277-1644

E. James Dixon, Ph.D.  
Director, Maxwell Museum of Anthropology  
College of Arts and Sciences

Email: [jdixon@unm.edu](mailto:jdixon@unm.edu)  
Phone: 505-277-4127

Kathryn Klein, Ph.D.  
Curator, Maxwell Museum of Anthropology  
College of Arts and Sciences  
Email: [kklein@unm.edu](mailto:kklein@unm.edu)  
Phone: 505-277-1936

Electra Luanne McKinnon, Ph.D. ABD  
Director, University Art Museum  
Email: [mckmodrn@unm.edu](mailto:mckmodrn@unm.edu)  
Phone: 505-277-6002

Deborah McLean, MBA  
Interim Director, Harwood Museum  
Harwood Foundation  
Email: [dmcanuk@unm.edu](mailto:dmcanuk@unm.edu)  
Phone: 505-758-9826

Sara Otto-Diniz, Ph.D.  
Training & Devt Consultant: Art Museum  
Email: [sodiniz@unm.edu](mailto:sodiniz@unm.edu)  
Phone: 505 277-4010

Michele Penhall, PhD.  
Curator, UNM Art Museum  
College of Fine Arts  
Email: [kapu@unm.edu](mailto:kapu@unm.edu)  
Phone: 505-277-2868

Joyce Szabo, Ph.D.  
Chair, Department of Art and Art History  
College of Fine Arts  
Email: [szabo@unm.edu](mailto:szabo@unm.edu)  
Phone: 505-277-5861

Thomas Turner, Ph.D.  
Director, Museum of Southwestern Biology  
College of Arts and Sciences Email: [turnert@unm.edu](mailto:turnert@unm.edu)  
Phone: 505 277-7541

## **11. Letters of Support**

### **11.1 Internal Letters of support and endorsement:**

- 1) Mark Ondrias, Chair of the College of Arts and Sciences Curriculum Committee
- 2) Jim Linnell, Interim Dean, College of Fine Arts
- 3) Michael W. Graves, Chair and Professor, Department of Anthropology
- 4) Joyce M. Szabo, Chair, Department of Art and Art History
- 5) E. Luanne McKinnon, Director, UNM Art Museum
- 6) Deborah McLean, Interim Director, Harwood Museum of Art
- 7) Thomas F. Turner, Director, Museum of Southwest Biology
- 8) John B. Cornish, Director of Curriculum Planning and Program Development
- 9) E. James Dixon, Director, Maxwell Museum of Anthropology

### **11.2 External Letters of support and endorsement:**

- 1) Jim Enote, Executive Director, A:Shiwi A:wan Museum and Heritage Center
- 2) Patrick Lopez, Executive Director, explora
- 3) Rita A. Powdrell, President African American Museum and Cultrual Center of NM
- 4) Laurie J. Rufe, New Mexico Association of Museums President
- 5) Hollis J. Gillespie, Executive Director, New Mexico Museum of Natural History and Science
- 6) Ellen Welker, President, Museum Cooperative council of Albuquerque
- 7) Tony R. Chavarria, Curator of Ethnology, Museum of Indian Arts & Culture/ Laboratory of Anthropology
- 8) Laurie J. Rufe, Director, Roswell Museum and Art Center
- 9) Cathy L. Wright, Director, the Albuquerque Museum of Art and History
- 10) Jim Walther, Director, National Museum of Nuclear Science & History
- 11) Wendy Bustard, Museum Curator, Chaco Culture National Historical Park Museum Collection, National Park Service
- 12) Marsha C. Bol, Director, Museum of International Folk Art, New Mexico

### **11.3 Letters of support from associated universities**

- 1) William Norris, Professor, Herbarium, WNMU
- 2) Miriam Langer, Chair, Department of Media Arts, New Mexico Highlands University
- 3) John Montgomery, Director Blackwater Draw Museum, Professor and Assoc Dean, Eastern New Mexico University